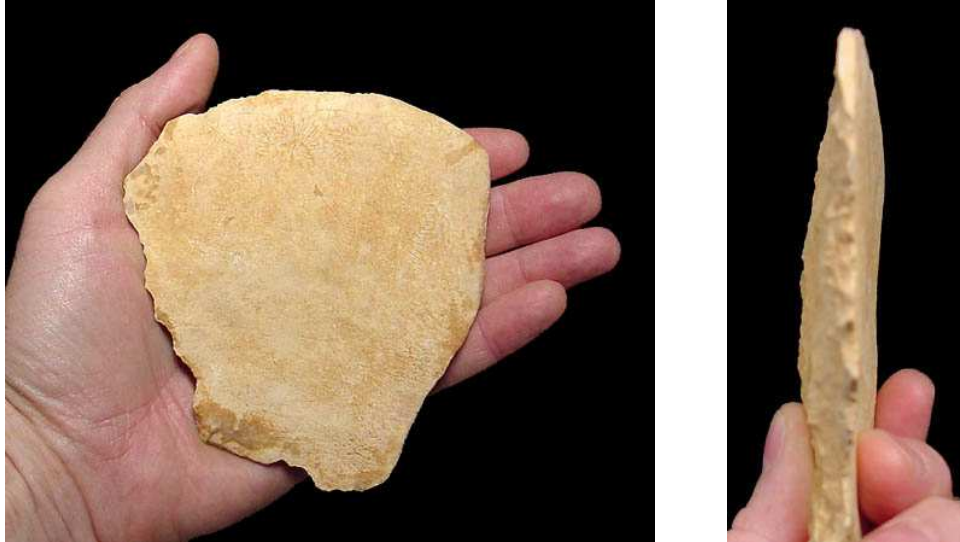


World Museum of Man

CAPSIAN TRADITION AFRICAN NEOLITHIC COLLECTION

ENGRAVED LARGE FLAKE

From <http://www.worldmuseumofman.org/500-1000/561.htm>



Ref #: 561

Type: Engraved and Incised Unifacial Flake

Material: Flint

Period: Capsian NW African Neolithic 8500 - 3000 years ago

Provenance: Northwest Africa

Measurements: 11.5 cm x 10.5 cm

Comments: It is a mystery what this engraving means. This is a seemingly naturally occurring (not struck) unifacial flake with marks engraved on its flat face. The other side of the flake is natural cortex. The entire surface of both sides features a heavily oxidized white patina.

The engraving was made with some delicate pointed sharp tool. There are six single-walled circles with lines radiating outward surrounding a seventh double-walled circle with similar radiant lines. Three of the surrounding circles have small dot marks engraved into their centers. One of the surrounding radiant circles has a cross-hatched rectangle in its center. At the base of the flake are several linear and block engraved regions all connected.



