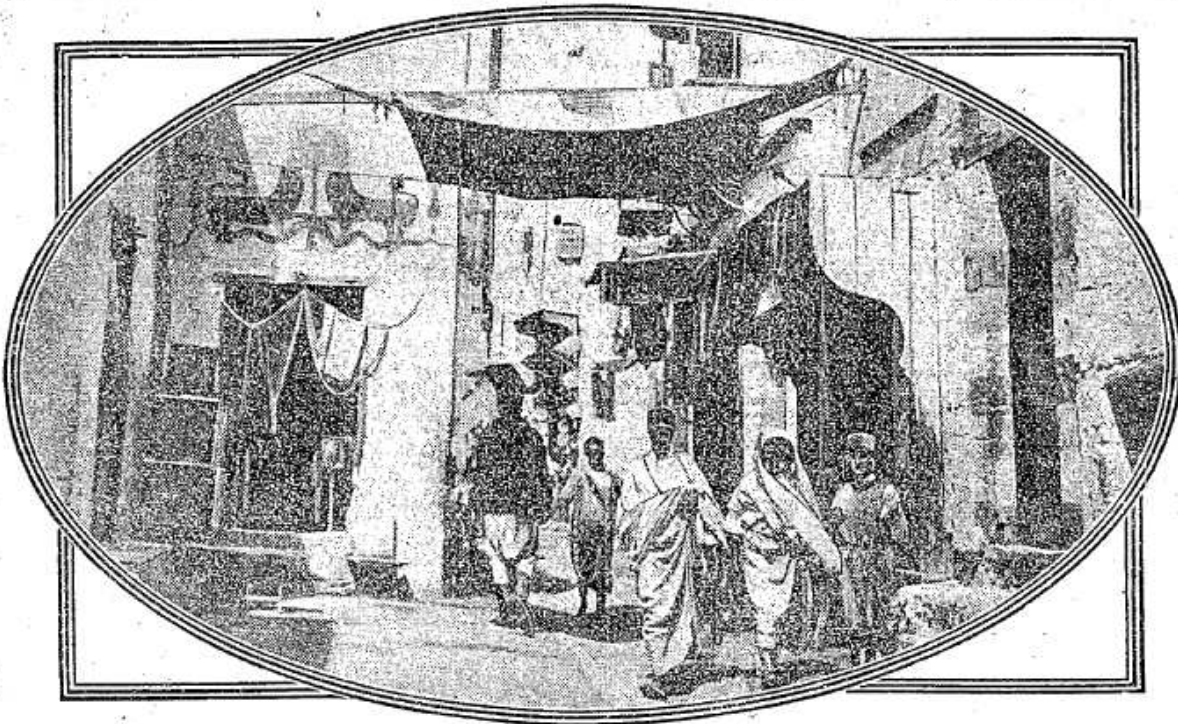
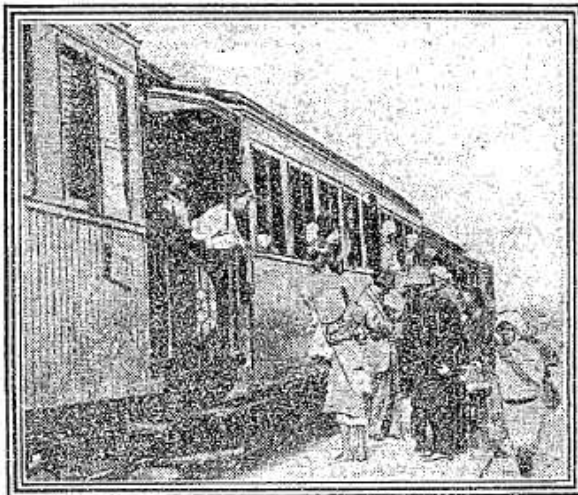


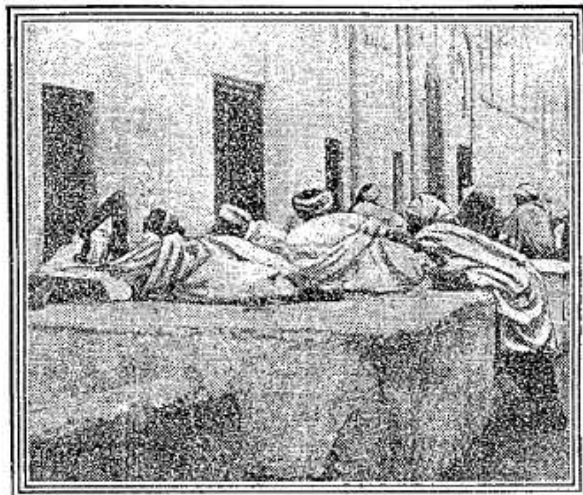
NATIVE LIFE IN A FRENCH COLONY



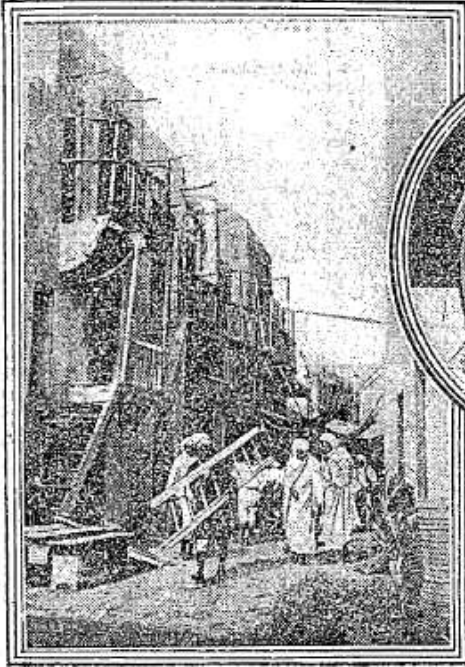
Scene in one of the principal streets in Sfax. Note the primitive mural decorations on the left. Sfax is a seaport in Tunis, about 200 miles from Tripoli.



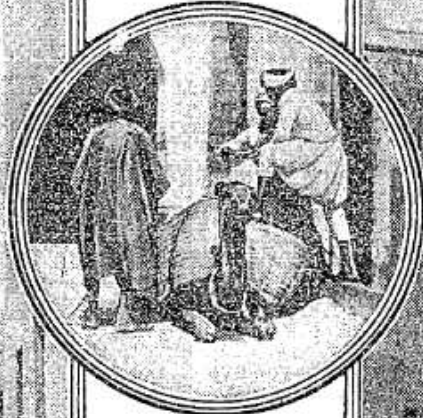
The Tunisian express which runs from Tunis to Sfax. Arabs buying pomegranates at El Djem, an intermediate station.



The beggars' parade outside the great mosque of Sfax



Primitive flats in Sfax

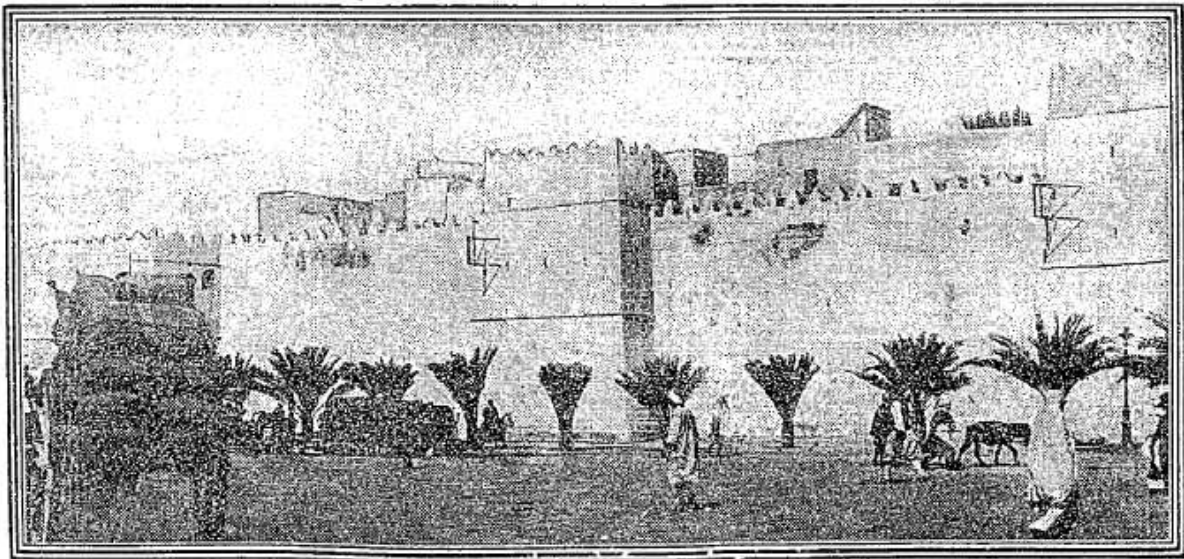


Camel loaded with merchandise, kneeling before its owner's shop.

**- Copyright -
Photographs by
Percival Phillips,
'Express' Special
Correspondent.**



The camel homeward plods his weary way



Outside the city walls of Sfax. The town is divided into the upper town (Mussulman) and the lower town, inhabited by Jews and merchants, each town separately walled.