

L'AFRIQUE DU NORD ILLUSTRÉE

Jules CARBONEL, Directeur

E. ANDREO, Administrateur

Direction et Administration : 41, rue Mogador, ALGER. — Tél. : 36.70 - 8.44
S. A. R. L. au capital de 278.000 francs. — R. C. 27.096.
Agence à PARIS : 2, boulevard Haussmann (entrée 2, rue Chauchat).
Tél. : Provence 76.74 à 76.78 et 53.37.

ABONNEMENTS :

ALGERIE, TUNISIE, MAROC : un an.....	60 fr.
FRANCE : un an.....	120 fr.
ETRANGER : un an.....	160 fr.

L'AFRIQUE DU NORD ILLUSTRÉE(p.4)

SAMEDI, 10 NOVEMBRE, 1934

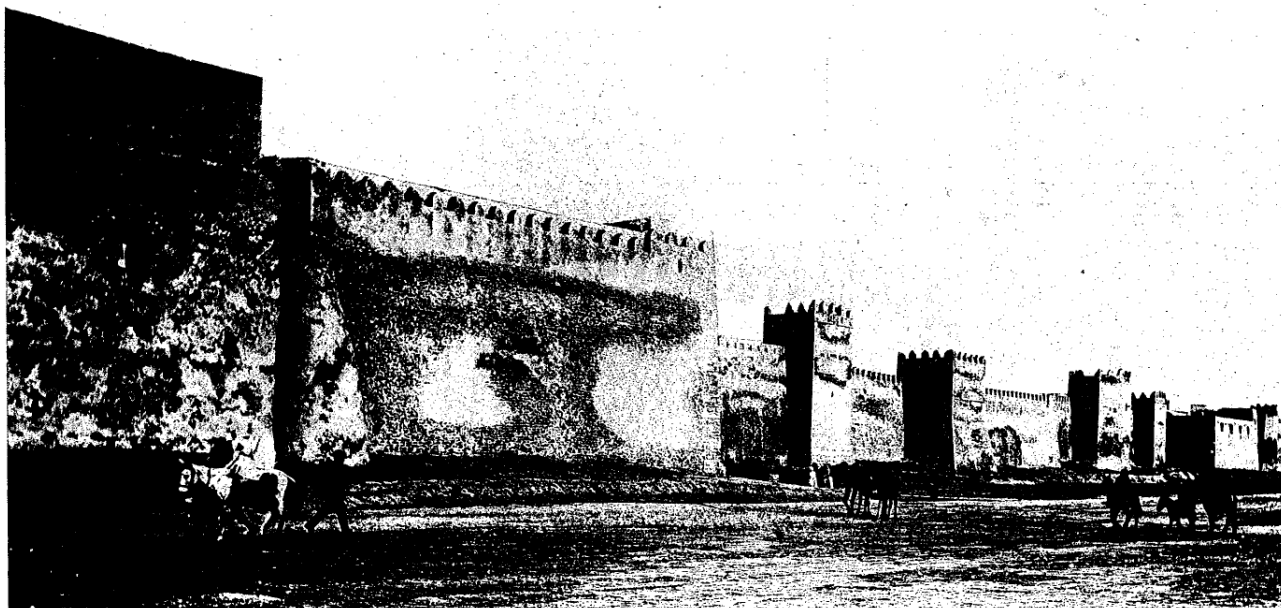


Photo Soler.

*Les remparts de la ville arabe de Sfax.***Sfax**

The capital of southern Tunisia, Sfax is classified today in the first rank of the ports of the Regency for the importance of its sea traffic. The phosphates of southwest Tunisia and oils which constitute the richness of the area are in fact loaded in Sfax.

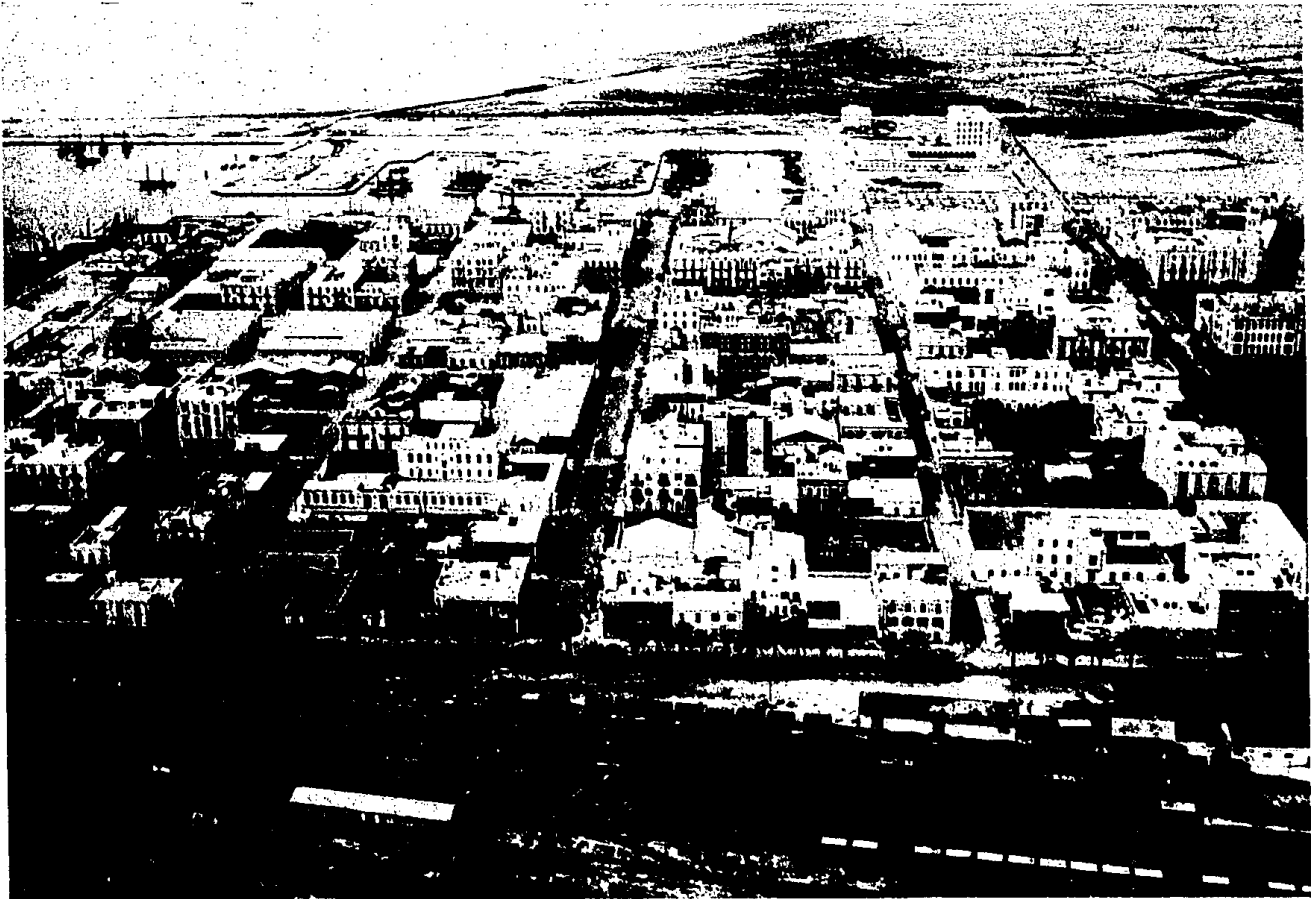
It has had an important place in history: an important Phoenician trading post, it became thereafter, under the name of "Taparura" a flourishing city of Proconsular Roman. Mainly destroyed during the great invasions, in the first centuries of the Hegira it was rebuilt by the Emirs who, inspired by the tradition of the Byzantine fortresses, girdled the town with high walls which were then restored at the

beginning of the XVIII century in their primitive model.

When France occupied Tunisia in 1881, the small European city consisted of a group of houses huddled at the foot of the ramparts of the Moslem city facing the sea. Moreover the European colony was then hardly more numerous than 800 people at most, including some French, Italians, Maltese, and English, all of them merchants trading in oils, sponges and esparto.

Majestic, the indigenous city extends with its belt of ramparts to form a vast quadrilateral of 425 meters wide by 550 meters long.

The extremely well preserved structure constitutes one of the purest samples of Saracen structure in our day.



La ville européenne conçue selon l'urbanisme moderne.

Because the builders of the new European city had the brilliant plan to keep intact its proportions and its monuments, this Arab city today attracts the admiration of foreign visitors.

The exploitation of this immense wealth represented by the phosphate layers mined in Metlaoui, Tabeddit, Redeyeff and M'Dilla required the creation of a deep water port as close as possible



La ville arabe.

Photos Morand.

to the centers extraction. It was Sfax which was chosen for multiple reasons and in particular in the forecast of a development of olive cultivation.

At the same time as the access channel to the open sea was created and a port inaugurated in 1897, the European city was built following a well conceived urban plan on a large scale, which could have been used as model even for the capital of Regency.

The founders of 20th century Sfax had had a grand vision, and yet day per day,

the voids are filled in this vast quadrilateral limited on one side by the port, on the other by the Arab city. Also now the city has a tendency to extend a point towards the South, by using the site of the old channel which today has been filled in.

A great city of trade and of the olive-growing industry, Sfax counts today approximately 43,000 inhabitants of which more than 34,000 are Moslems and 9,000 Europeans.